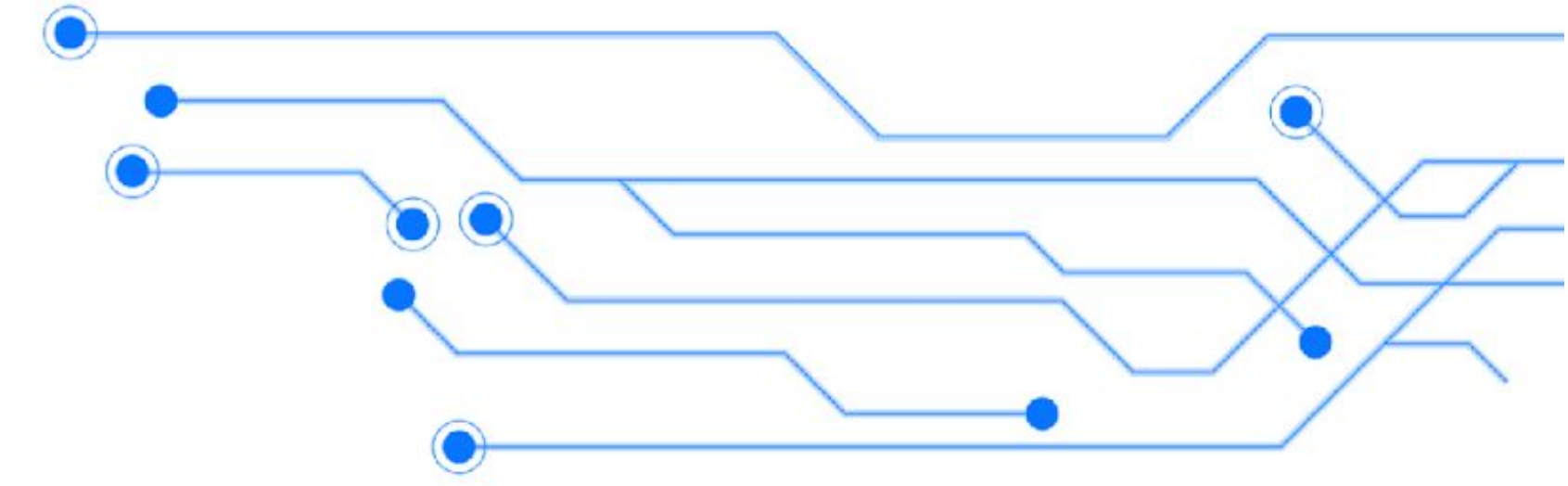


INTELLICO

Analyze . Engineer . Automate



Delivering a great software product has **four main phases:**



01



Documentation

02



Development

03



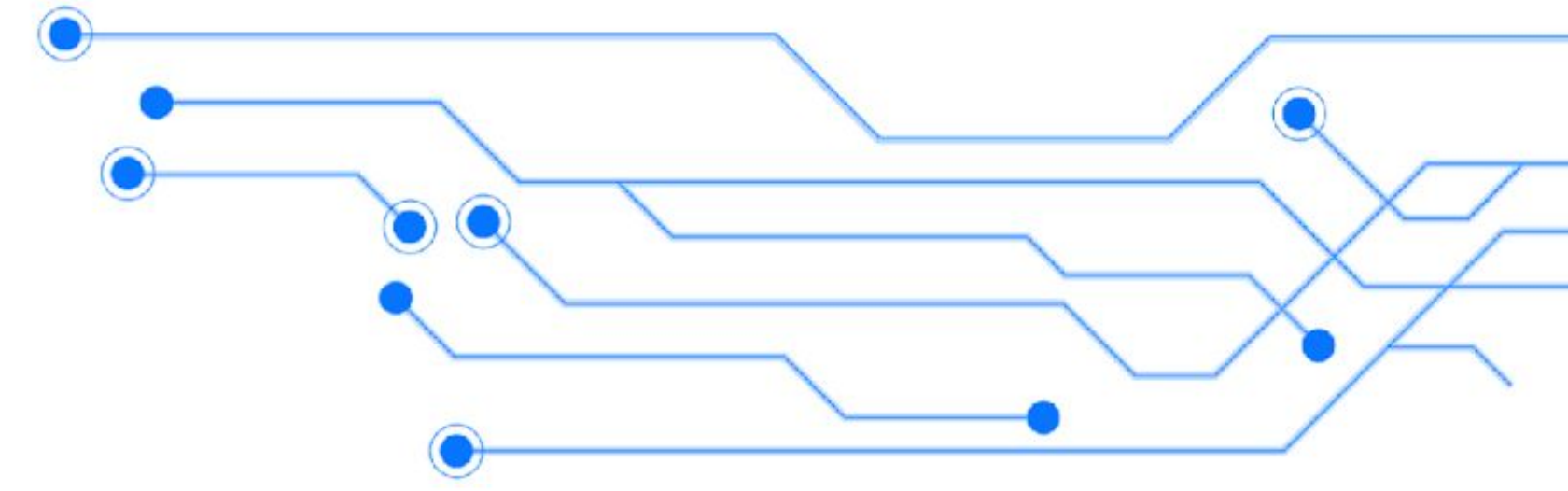
Quality & Testing

04



Product Release

Delivering a great software product has **four main phases:**



01



Documentation



Our Playground

02



Development

03



Quality & Testing

04

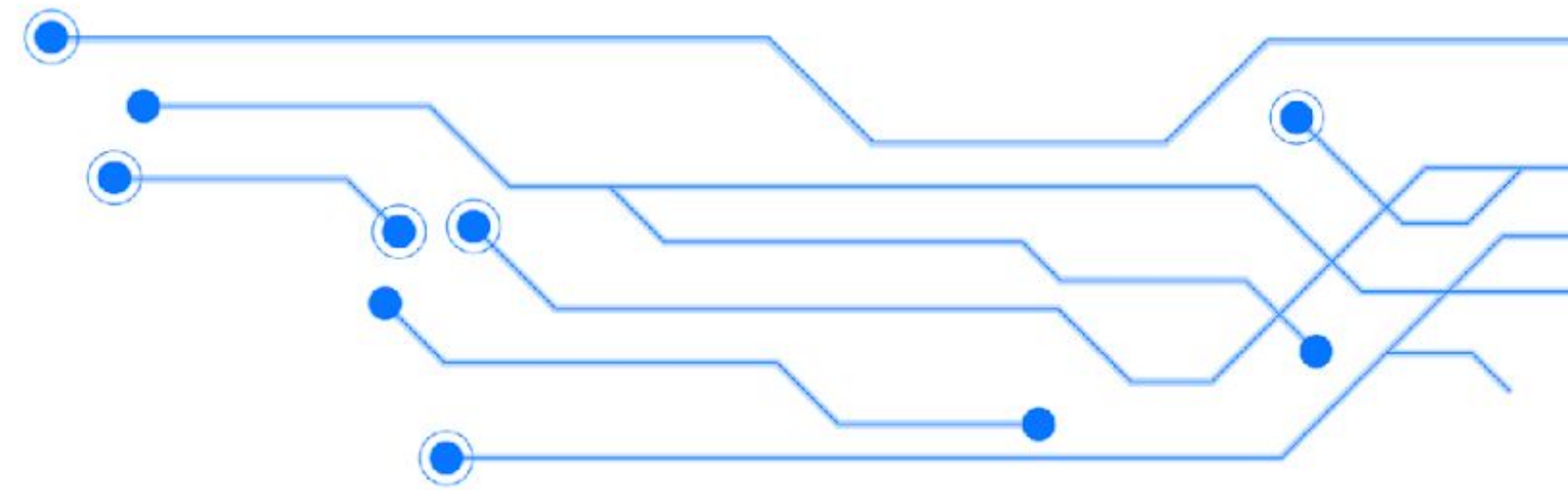


Product Release

The Current Problem

- 01** Human Errors
- 02** Expensive Reworks
- 03** Misaligned Business Objectives
- 04** Manual Documentation Processes





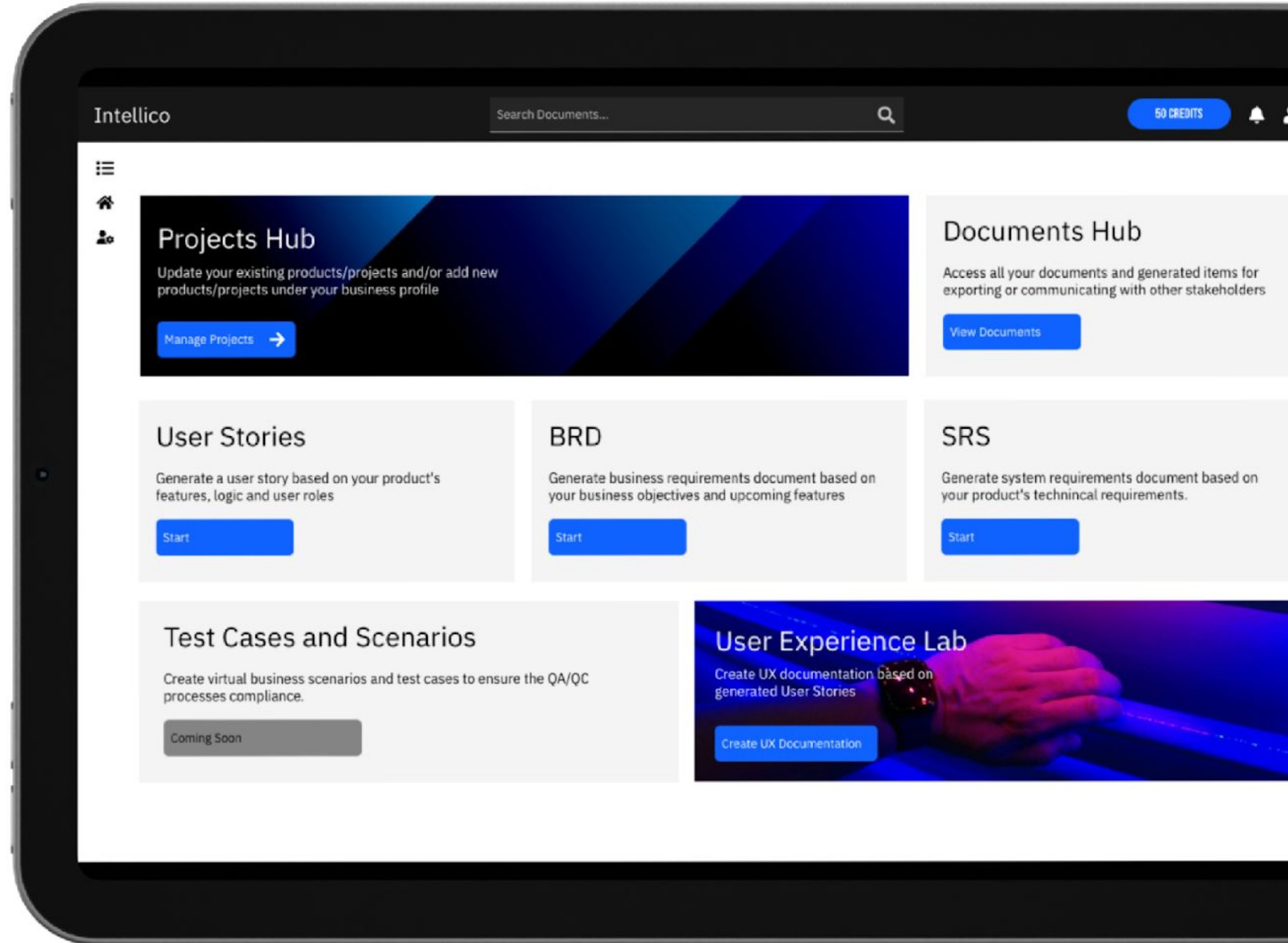
Solution

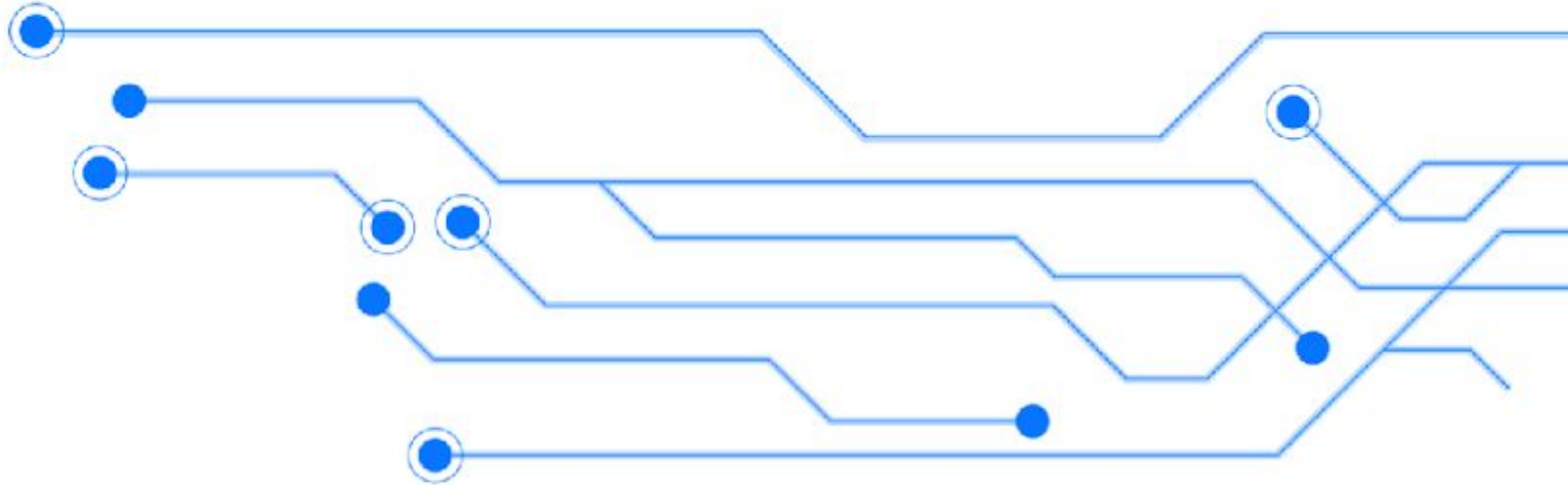
A B2B SaaS platform that manages the entire product documentation process

01 AI-Powered Document Generation

02 Aligned Business Objectives

03 Higher Accuracy in Less Time



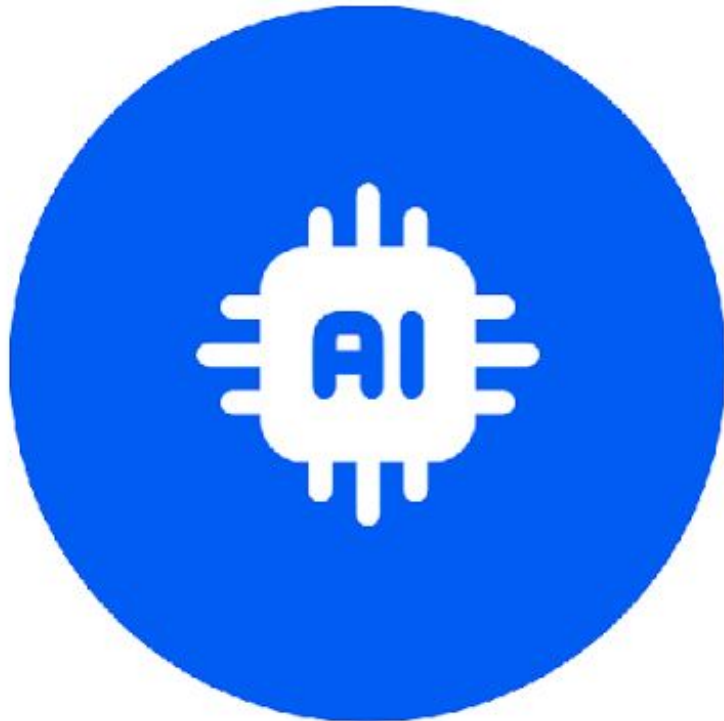


How it Works

Chaos to Clarity!



Onboard Your Product



Our AI-Technology Analyzes the Product



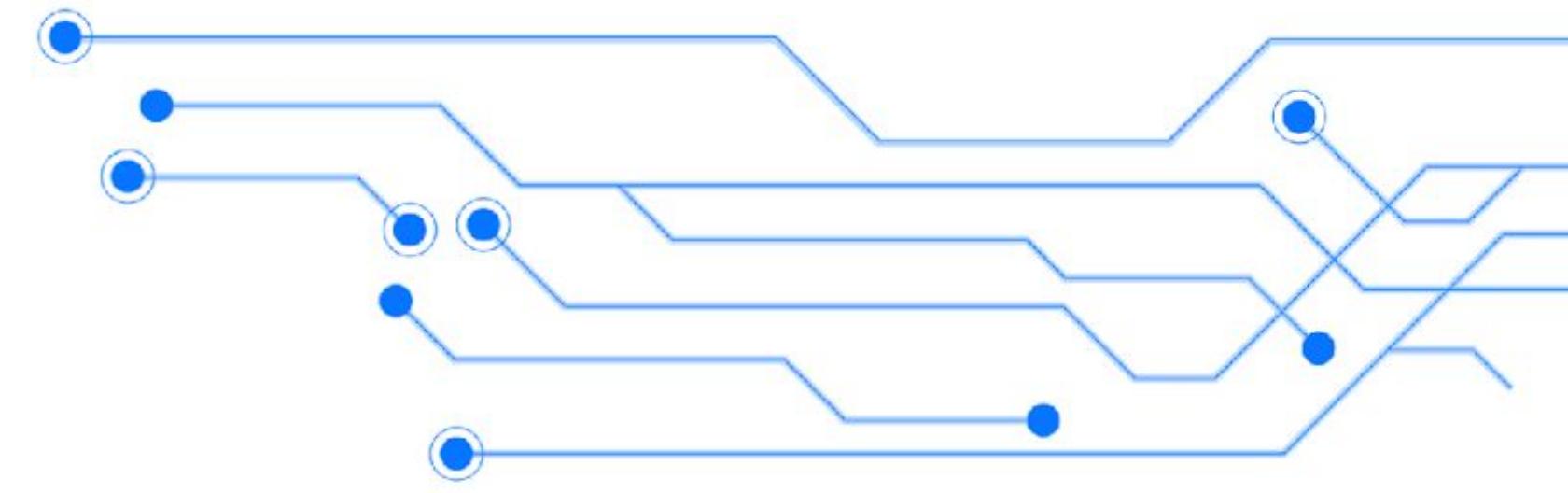
Generate Relevant Documentation



Adjust, Export & Sync

Traction

In the Last 4 Months



Product
Launch v 1.0

Joined a leading
AI Accelerator
in the region

3 POCs Running

Beta Testing with
100+ Experts

Infrastructure

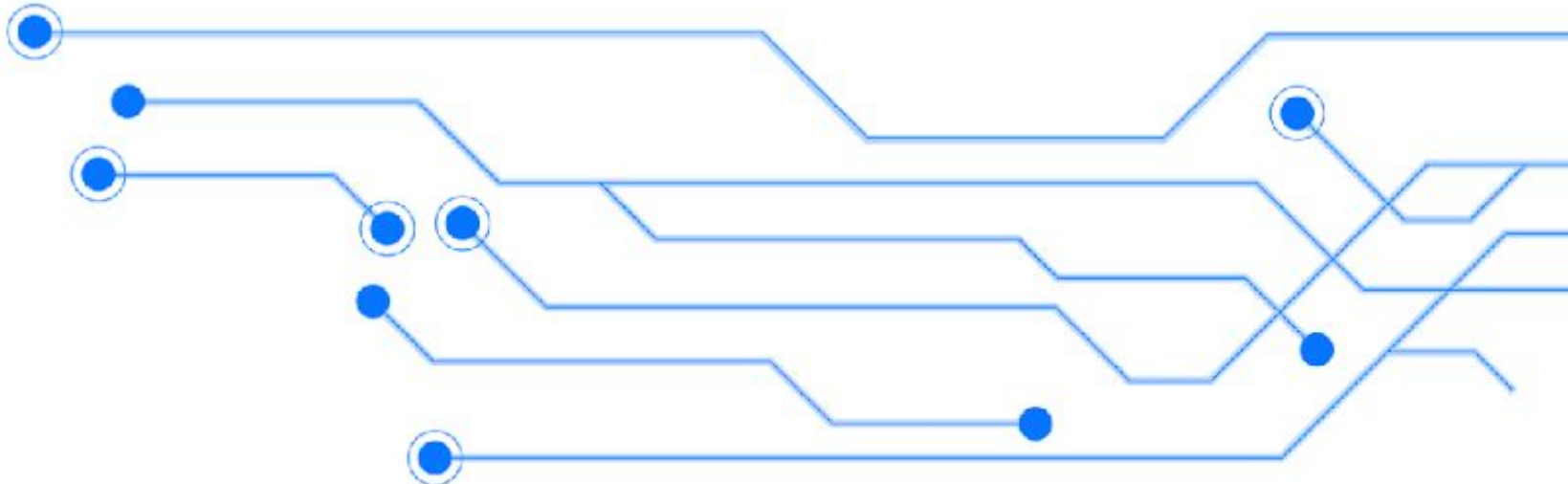


Fundraising - Pre-Seed

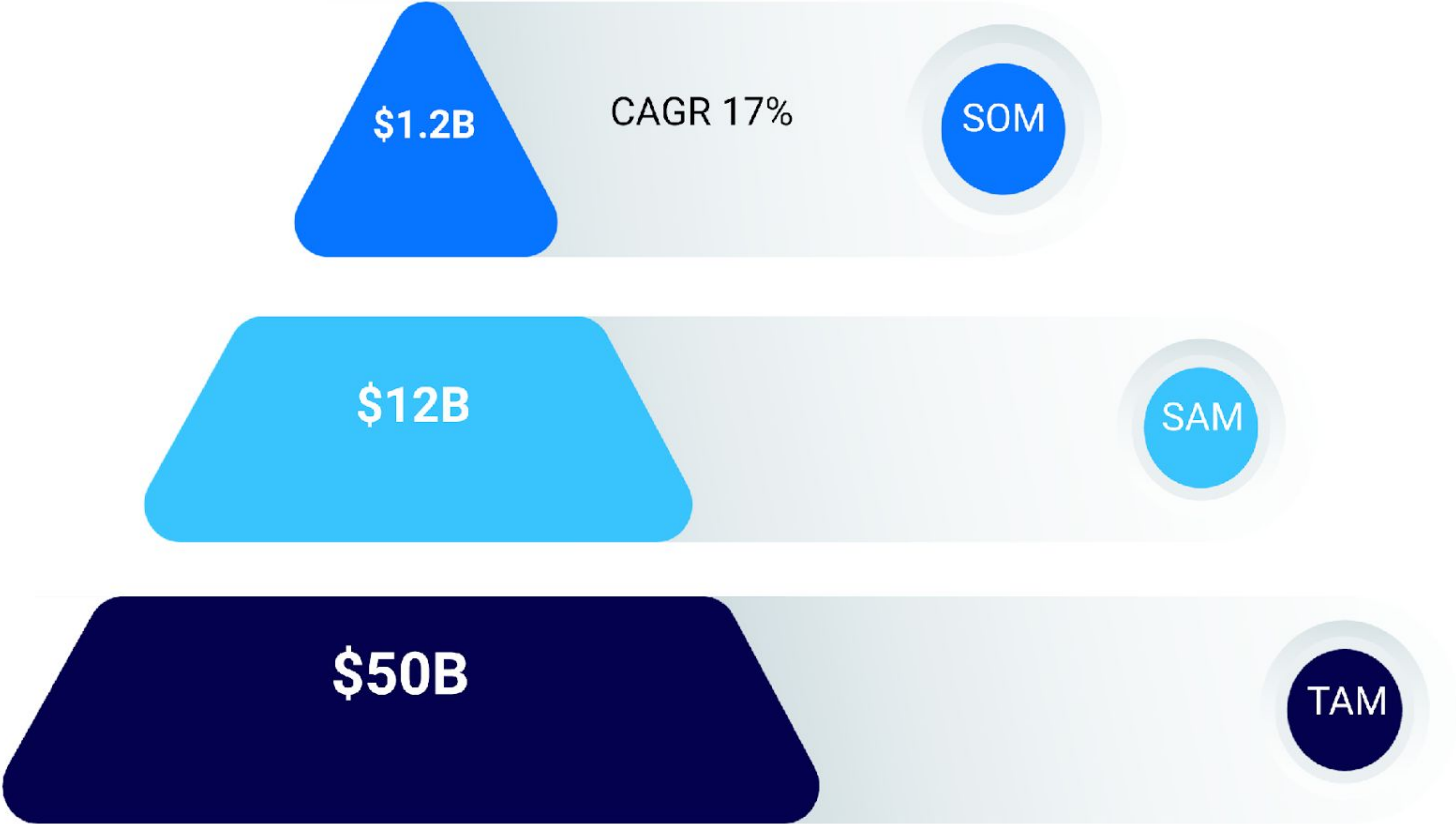


AI Acceleration Program



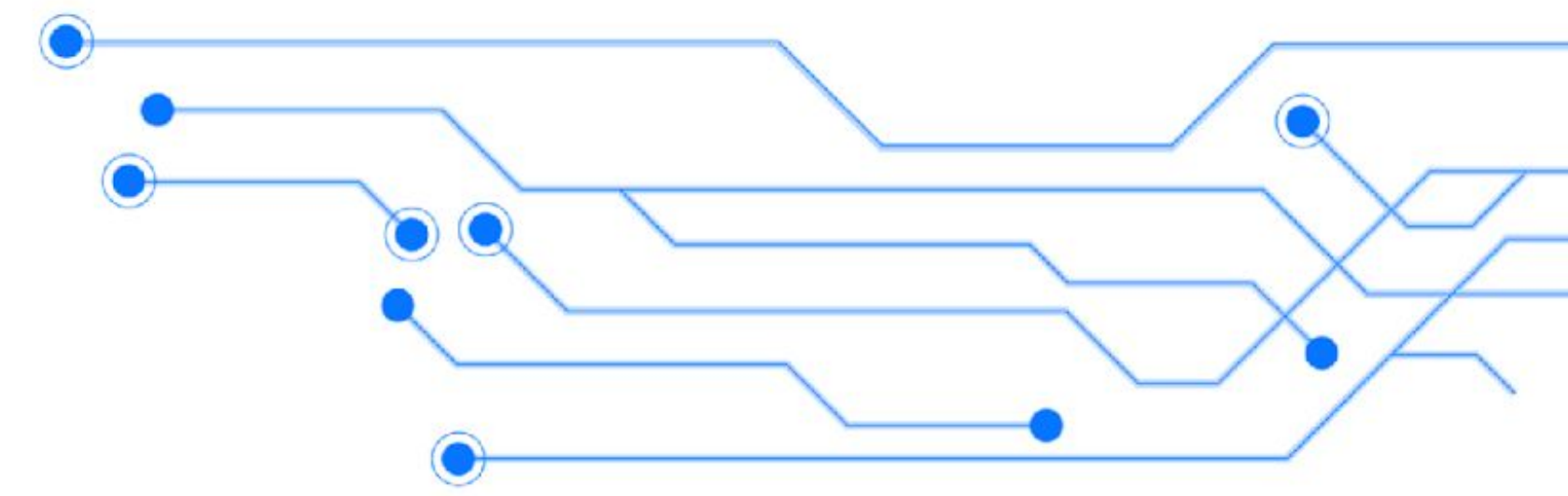


Market Size



Business Model

Tiered SaaS + Enterprise Solution



Mini-Mizer

Year/**\$2,500**

- ✓ AI-powered document generation
- ✓ Projects Hub
- ✓ Documents Hub

Advanced

Year/ **\$7,000**

- ✓ Knowledge base integration
- ✓ Basic collaboration features
- ✓ Advanced AI generation

Einstein

Year/ **\$15,000**

- ✓ Knowledge base Creation
- ✓ Advanced Collaboration Features
- ✓ 3rd party integrations

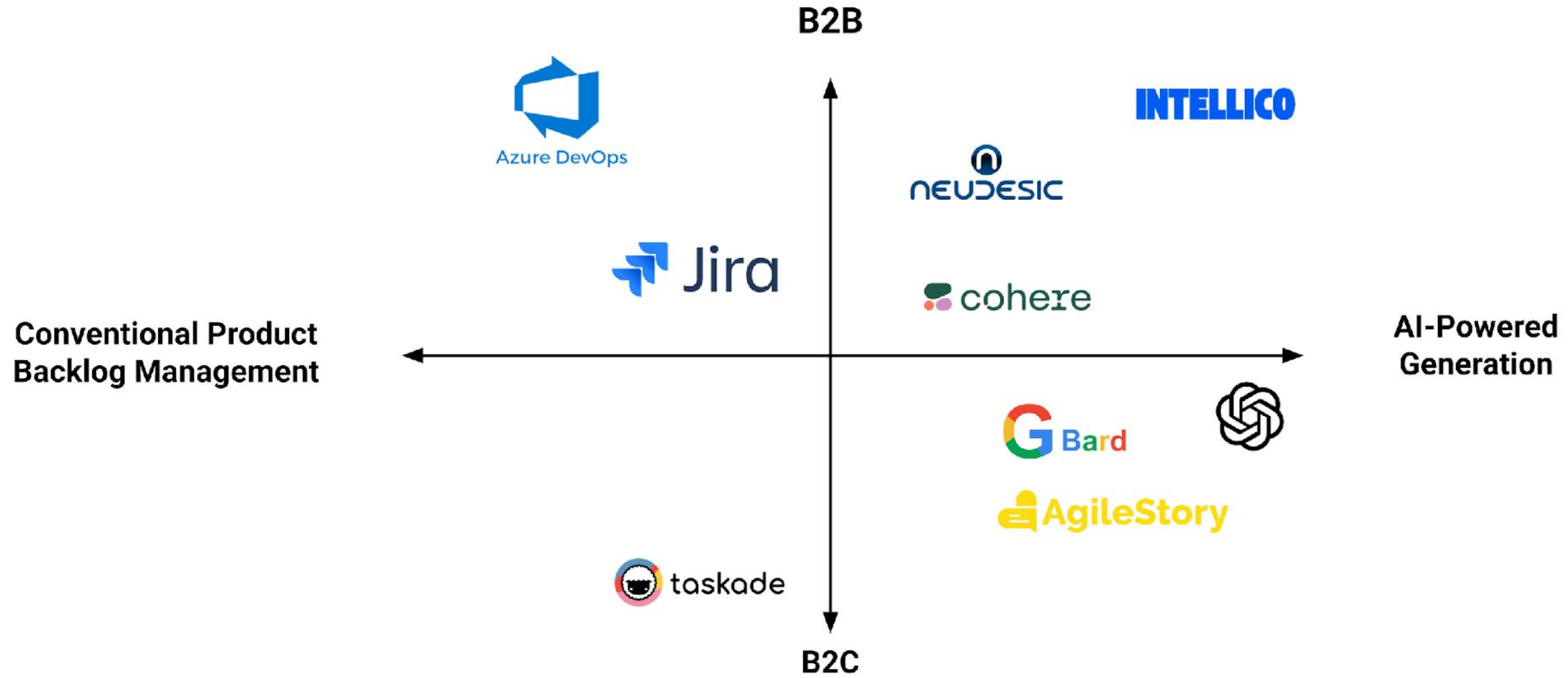
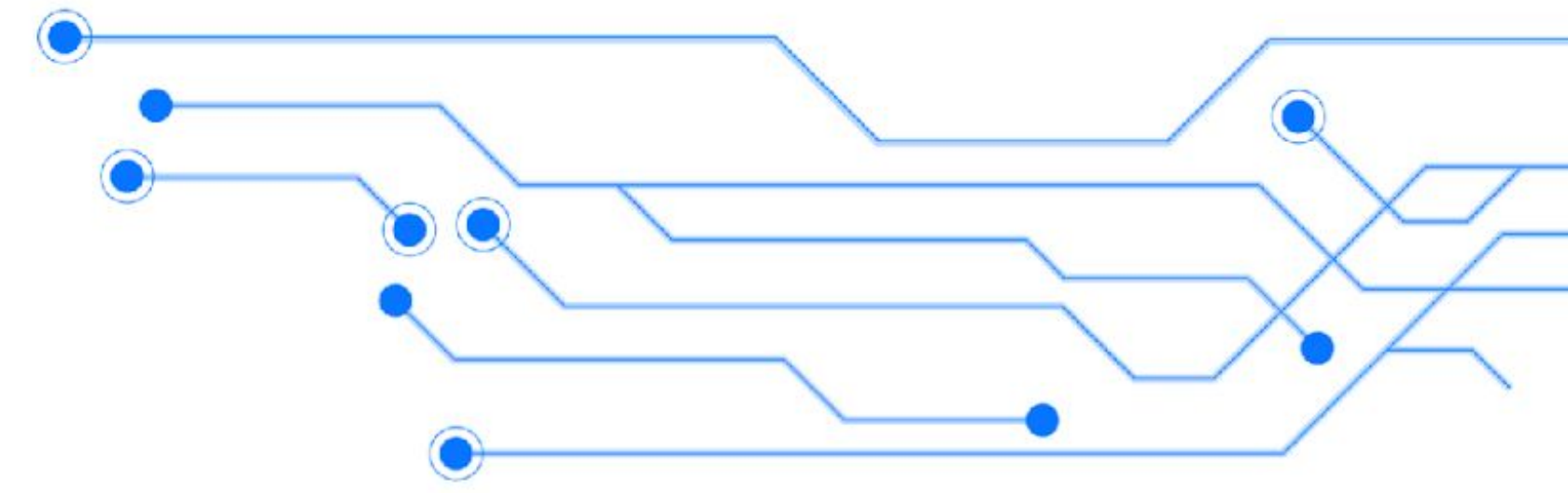
Enterprise

Get a Quote

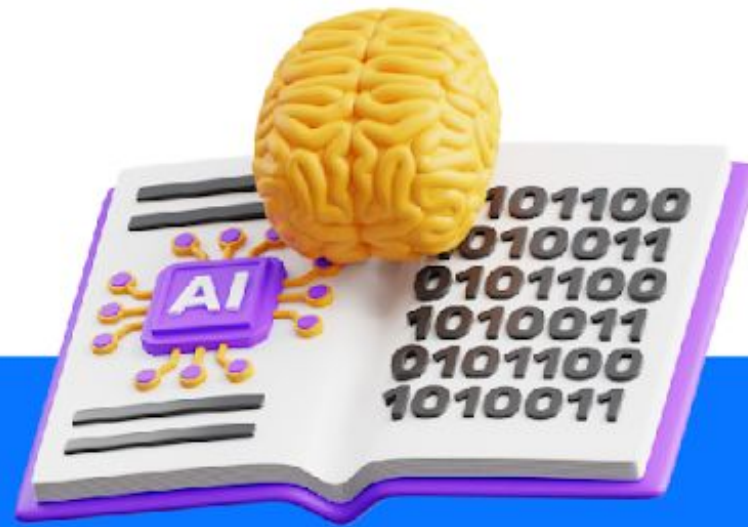
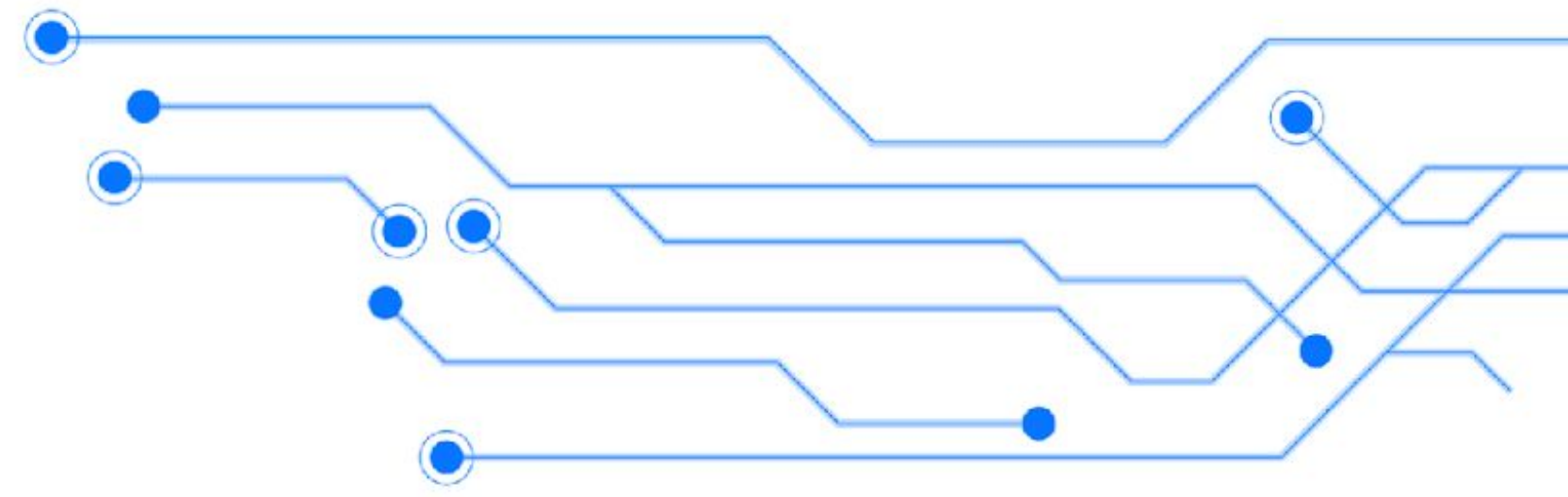
Product customization

- ✓ Product customization
- ✓ On-Prem option
- ✓ Workflow and process customization

Competition



Our Edge



Brainstorming Feature

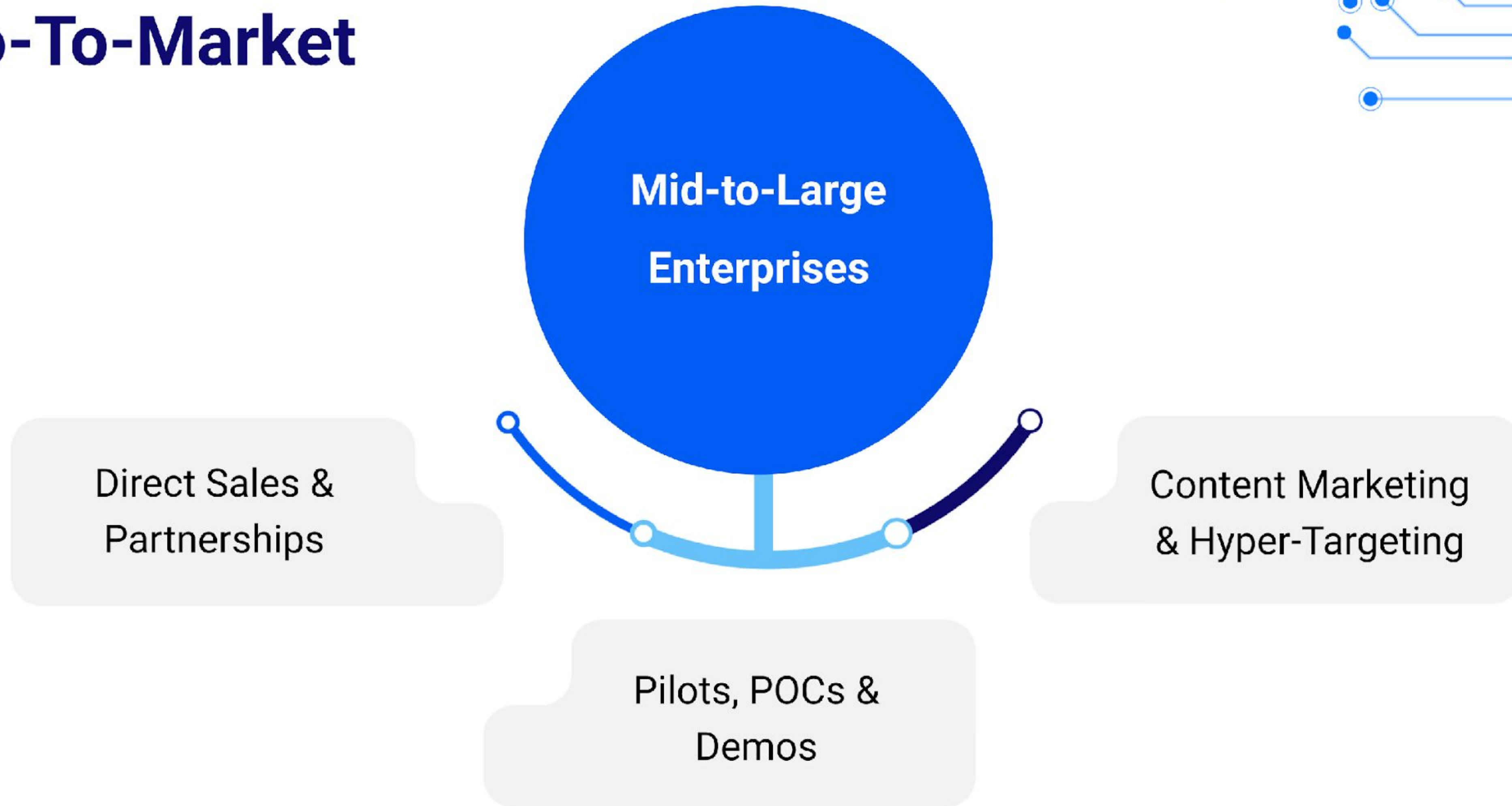
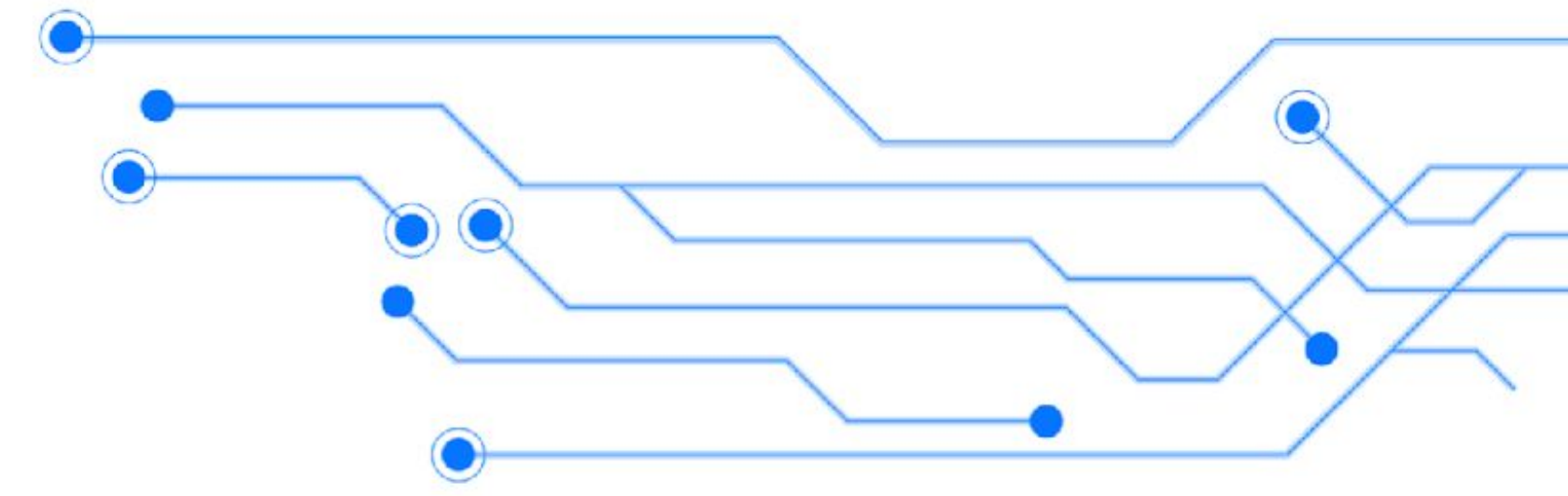


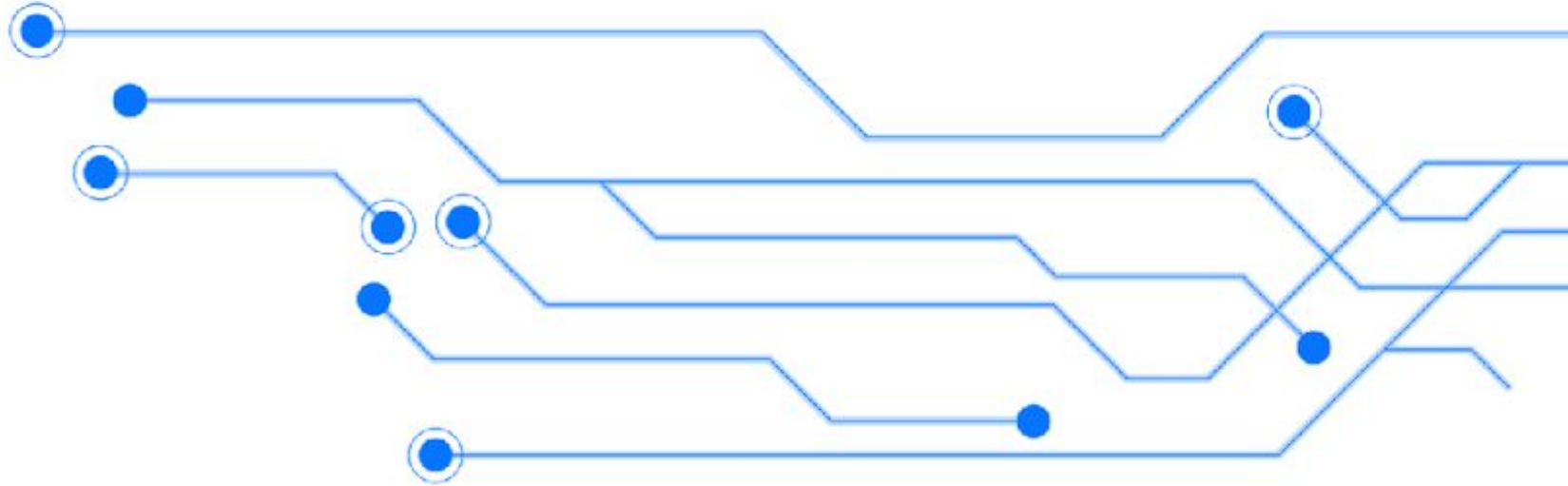
**On-Prem and Private
Cloud Solution**



Contextual Generation

Go-To-Market





Super Relevant Team

20 Year Friendship



Aymen Amerah

CO-FOUNDER - CEO



CEO



Amjed Alsadeq

CO-FOUNDER - CIO



CIO



Moamen Omar

CO-FOUNDER - CTO



CTO



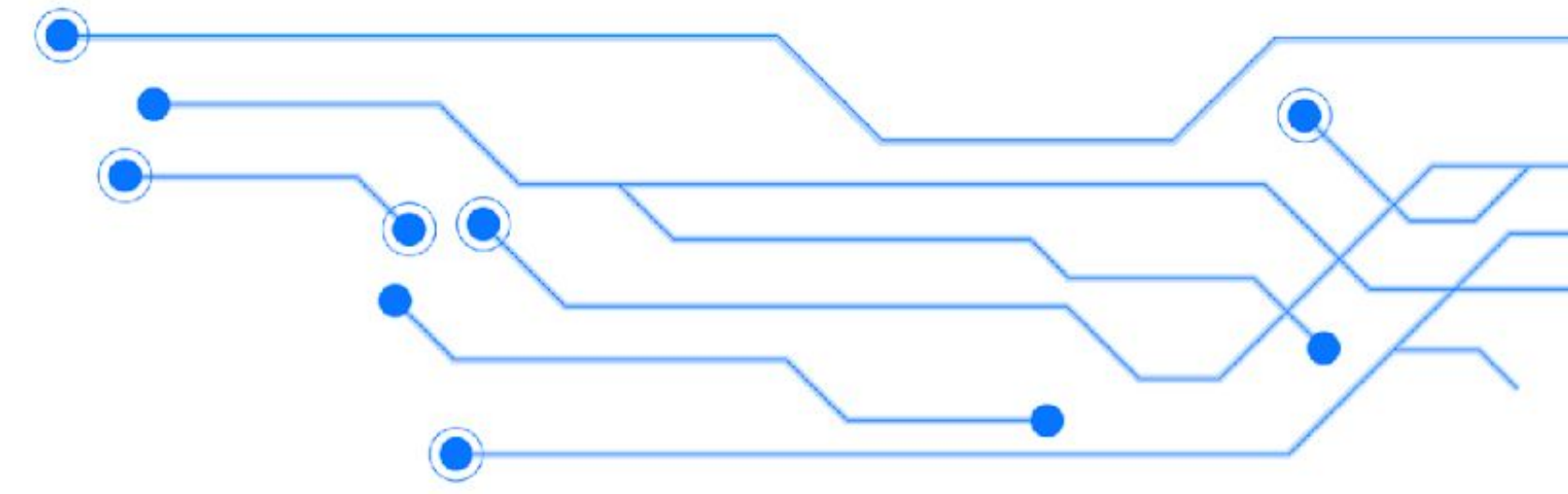
Sara Albashtawi

ML ENGINEER




ML

The Ask



Use of Funds
In the Next 12 Months:
\$50K MRR
GCC Expansion

\$500K



Tech And Development
25%



Operations
40%



Marketing and Sales
35%

INTELLICO

Bridging the gap between business requirements and product development.

